



Thailand

Capital: Bangkok

Official Language: Thai

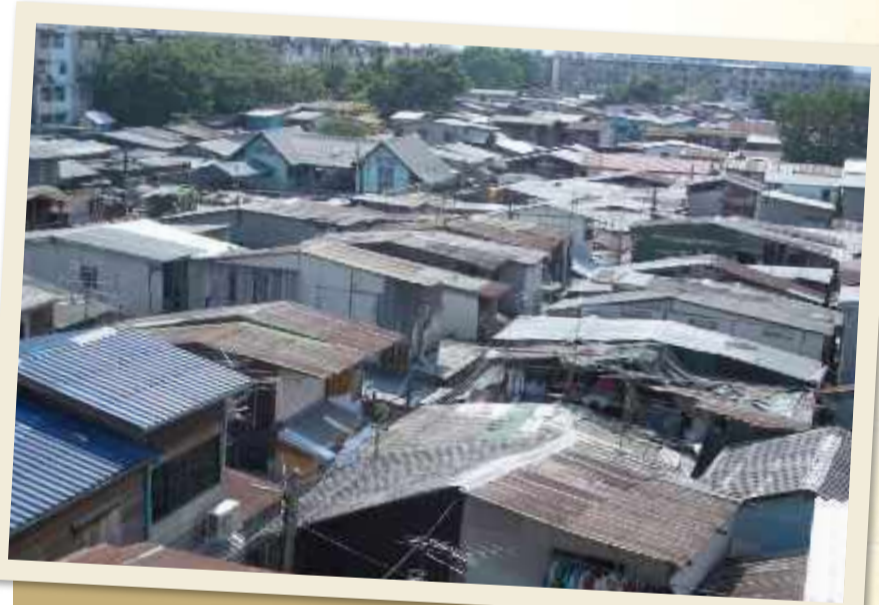
Population: 62,833,000

Government: Constitutional Monarchy

Education: Thailand boasts a high level of literacy due to an efficient system of kindergartens, primary and upper secondary schools along with numerous vocational colleges and universities. Education is compulsory only until Grade 9 however the government provides free education through to Grade 12.

Religion: Approximately 95% of Thai people are Buddhists with Muslims making up 4.6% of the population. The southernmost provinces of Thailand have dominant Muslim populations, consisting of ethnic Thai and Malay people. As in most Asian cultures, respect for family is a vital component of Thai spiritual tradition.

Culture: The culture of Thailand consists of a mix of influences from India, China, Cambodia and its other Southeast Asian neighbours. Contemporary Thai identity and belief is tied up with the main theology of Theravada Buddhism.



Thailand had 1.7% of Christians among the total population by 1998.

For more information
please contact UnitingWorld

Ph +61 2 8267 4265

www.unitingworld.org.au

